



Original Pictures taken from my friend Frank Zetian



Edited Fotografis for front, back and side texture of the body



Painted Displacement-Map



Final 3D Model



Interface to connect to modern electronics like a television or a dream generator.

Monocle for professional watching of very little plants

His old jacket, which is still from the old days when he was a worker in the refineries

**DELIVERY**

Short movie © 2005 by Till N. Seak | [www.delivery-homobus.de](http://www.delivery-homobus.de)

Some photographs used in the industrial city



One floor of this building became a train wagon

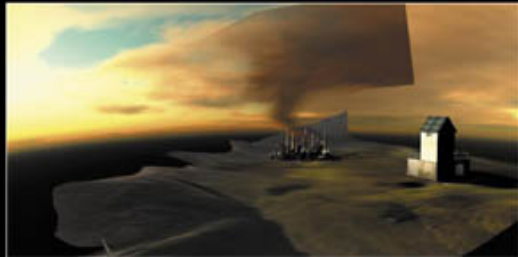
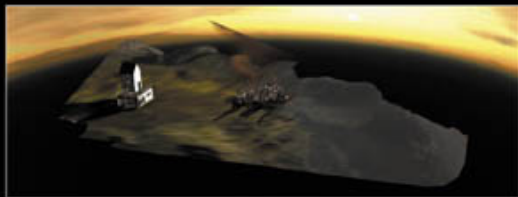


This foto was used as texture (90 degrees rotated)



This foto was used to texture the train station

The antenna on the roof is still recognizable



**DELIVERY**

Short movie © 2005 by T11 Network | [www.deliveryframebox.de](http://www.deliveryframebox.de)



This distorted rendering was mapped on a part of a sphere to simulate the view through the hole in the sky into the interior.



The main sky map, made by Johannes Schiöck ([www.schoeck.com](http://www.schoeck.com))



The sky map of the final scene, made by Johannes Schiöck ([www.schoeck.com](http://www.schoeck.com))



Main landscape map



More vegetative landscape map which was used near the tower



Early upward draft

**DELIVERY**

Short movie © 2005 by TSI Studios | [www.deliveryframebox.de](http://www.deliveryframebox.de)



Shaded model



wireframe model



text render



Poking Tests after the attachment of bones



Before and after mixing some aging into the texture

**DELIVERY**

Short movie © 2005 by Till Nawak | [www.deliveryframebox.de](http://www.deliveryframebox.de)

## High-Res-maps for the background to be seen through the window



Animated Smoke-Map



1. Original Situation



3. After the storming

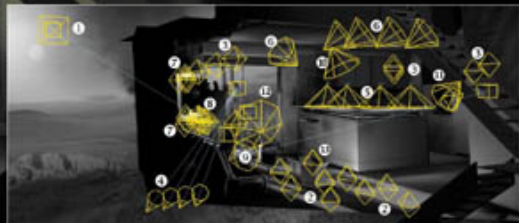


2. With open sky



4. At the End

## Light setup



- 1 Direct sunlight
- 2 Overlight-Array for indirect light from the floor
- 3 Overlight-Array for indirect light from the walls
- 4 Spotlight-Array for indirect light from outside
- 5 Spotlights over the bar
- 6 Negative Lights to fade soft shadows
- 7 „Jumping“ animated lights for the water-column
- 8 Overlight-Array for the lightsource under the shelf
- 9 Spotlight for soft shadows at the stairs
- 10 Spotlight for shining of the bar-spots on floor
- 11 Lightsources within the mallace
- 12 spotlights for indirect light on the balcony

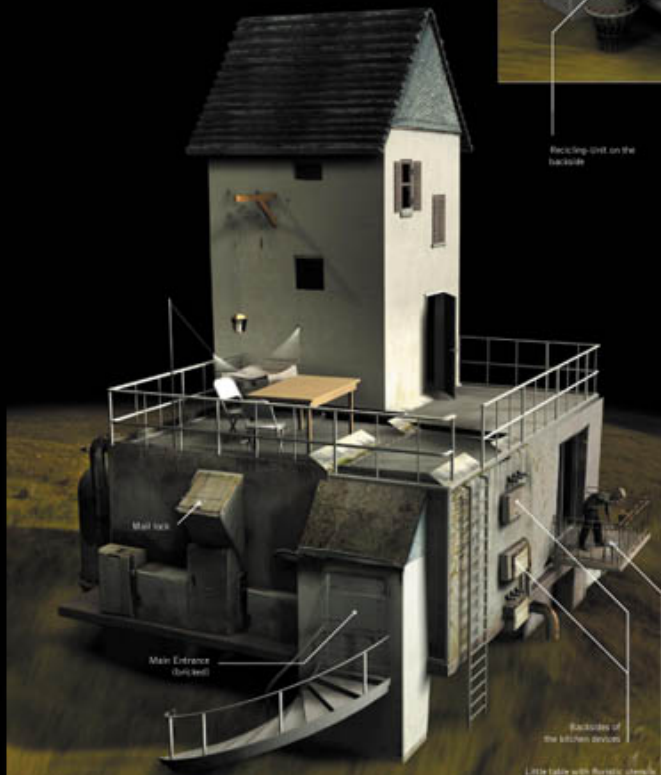
DELIVERY

Short movie © 2005 by TGI Masaki | [www.deliveryshortmovie.de](http://www.deliveryshortmovie.de)





Recycling bin on the roadside



Recycling bin on the roadside

Little table with futuristic chairs

## DELIVERY

Short movie © 2005 by Tōji Kawakami | [www.delivery-hometopia.de](http://www.delivery-hometopia.de)